

# Funds Available to Fix Water Issues on Public Roads

## PA Dirt, Gravel, and Low Volume Road Program



**Water** is a leading reason why roads deteriorate.

Improving water management on roads reduces routine maintenance needs, **saving time and money.**

PA county conservation districts have **grant funding available** for public road owners to **correct water issues on public roads.**

### The Dirt, Gravel, and Low Volume Road (DGLVR) Program

provides grant funding to municipal and state entities to fix water issues on public roads that drain to streams, lakes, and wetlands.



*Cross pipes are commonly used in DGLVR projects to direct water away from the road and nearby streams.*

- Funds can be utilized to improve unpaved roads and paved roads with low traffic (500 cars or fewer).
- Funded projects focus on spreading out and slowing down storm water to prevent roads from washing out.
- Projects can also address subsurface water issues, road base and ditch instability, undersized stream crossings, road bank slides, road surfacing, and more!



*Public roads that drain to streams or otherwise impact water quality are likely eligible for DGLVR funding.*



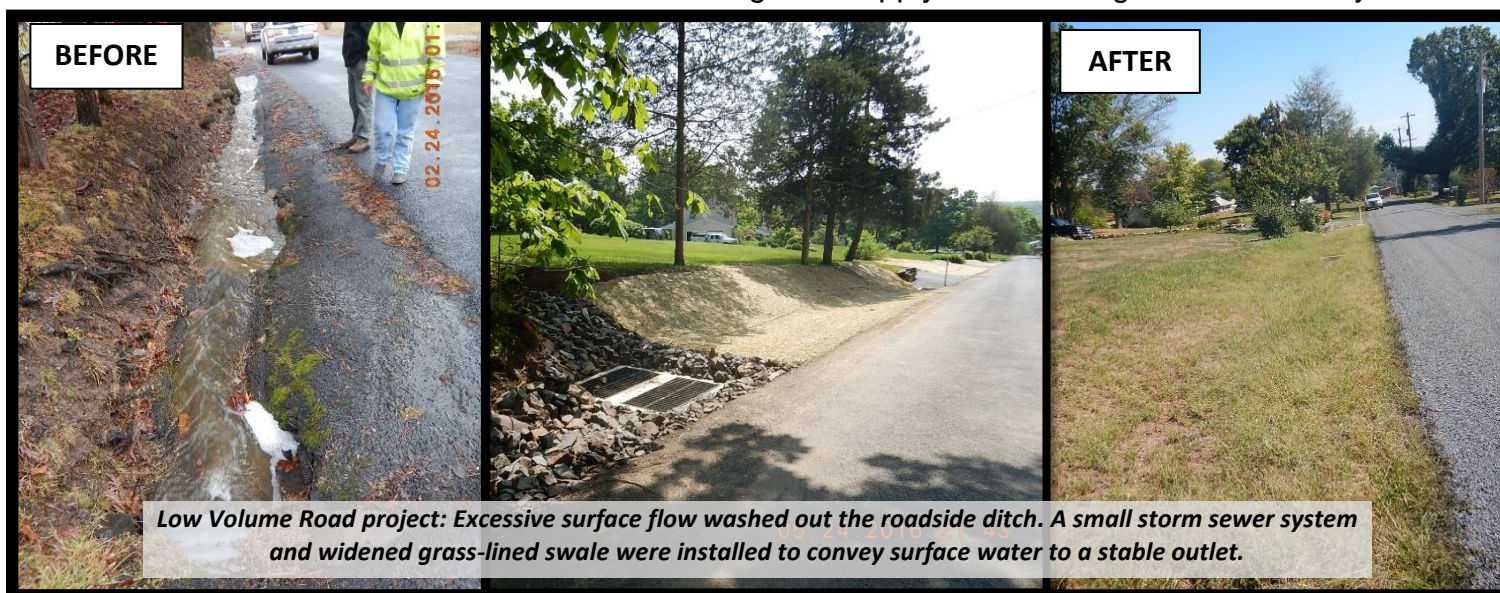
## Getting Involved

### 1. Reach out to your County Conservation District

- PA county conservation districts run the DGLVR Program locally.
- Contact information for your conservation district can be found online at: <https://dirtandgravel.psu.edu/pa-program-resources/conservation-districts/>

### 2. Attend Environmentally Sensitive Road Maintenance (ESM) Training

- This 2-day training provides knowledge and tools for road owners to maintain roads in a more cost-efficient and environmentally sensitive manner.
- Free to attend and meals are provided.
- Register online at: <https://dirtandgravel.psu.edu/education-training/esm-course/in-person-esm-trainings/>
- Provided by the Penn State University Center for Dirt and Gravel Road Studies.
- Attendees are “ESM Certified” and eligible to apply for DGLVR grant funds for 5 years.



## Eligibility

- The grant applicant must be a PA municipal or state entity that owns the road where the proposed project will be completed.
- The person in charge of work plan development/project implementation must be ESM Certified.
- The road must be open to public motor vehicle travel for a minimum of 2 consecutive weeks annually.
- The road must be one of the following:
  - **Dirt and gravel roads:** unpaved surface of natural material or rock aggregate with no binder.
  - **Low volume roads:** paved/sealed surface with average daily traffic of 500 vehicles or less.
- The road drainage must impact a stream, lake, wetland, or other water body.
- DGLVR Projects must focus on both environmental and road improvements, typically by using ESM practices. These practices prevent water from washing road material into nearby water bodies, simultaneously reducing routine maintenance costs and improving stream health.